

Alaska Department of Fish and Game

Habitat Section
Southeast Region



191-20-13400

CORRECTION

Water body name: Big Sandy Creek

Survey date: 8/24/2024

Quad: Icy Bay D2, D3

Species & Lifestage: Cos, DVp

Upper Reach Latitude: 59.994012 **Longitude:** -141.760363

Survey crew: NJ, CD, FC

Lower Reach Latitude: 59.991138 **Longitude:** -141.766177

Findings: We surveyed this cataloged stream using a backpack electrofisher and GPS and found that the stream path is incorrectly mapped. The main flow of this stream parallels the road running north west, then jumps the road and heads south. This is a highly mobile area so it likely changes depending on high water events. The exact route south of the road is unclear but drawn based on topography (Table 1; Figures 1, 2).

Recommendations: Correct Stream No. 191-20-13400 in the anadromous waters catalog to reflect the field verified stream path (Figure 3).

Nomination: Pending

Table 1.–191-20-13400 survey data.

Waypoint	Latitude	Longitude	Notes	Stream Width ft	Stream Substrate	Habitat Features	Gradient %	Sample Effort	Sample Results
1180	59.994533	-141.763950	Main flow parallels road where the distributary line is currently showing, needs to be route corrected. During high water as seen earlier, main flow will jump the berm and flow down the road.	10-12	Cobble Large Gravel		4-6		



Figure 1.–Stream paralleling the road, looking upstream at waypoint 1180.



Figure 2.–Stream crossing the road at waypoint 1180.

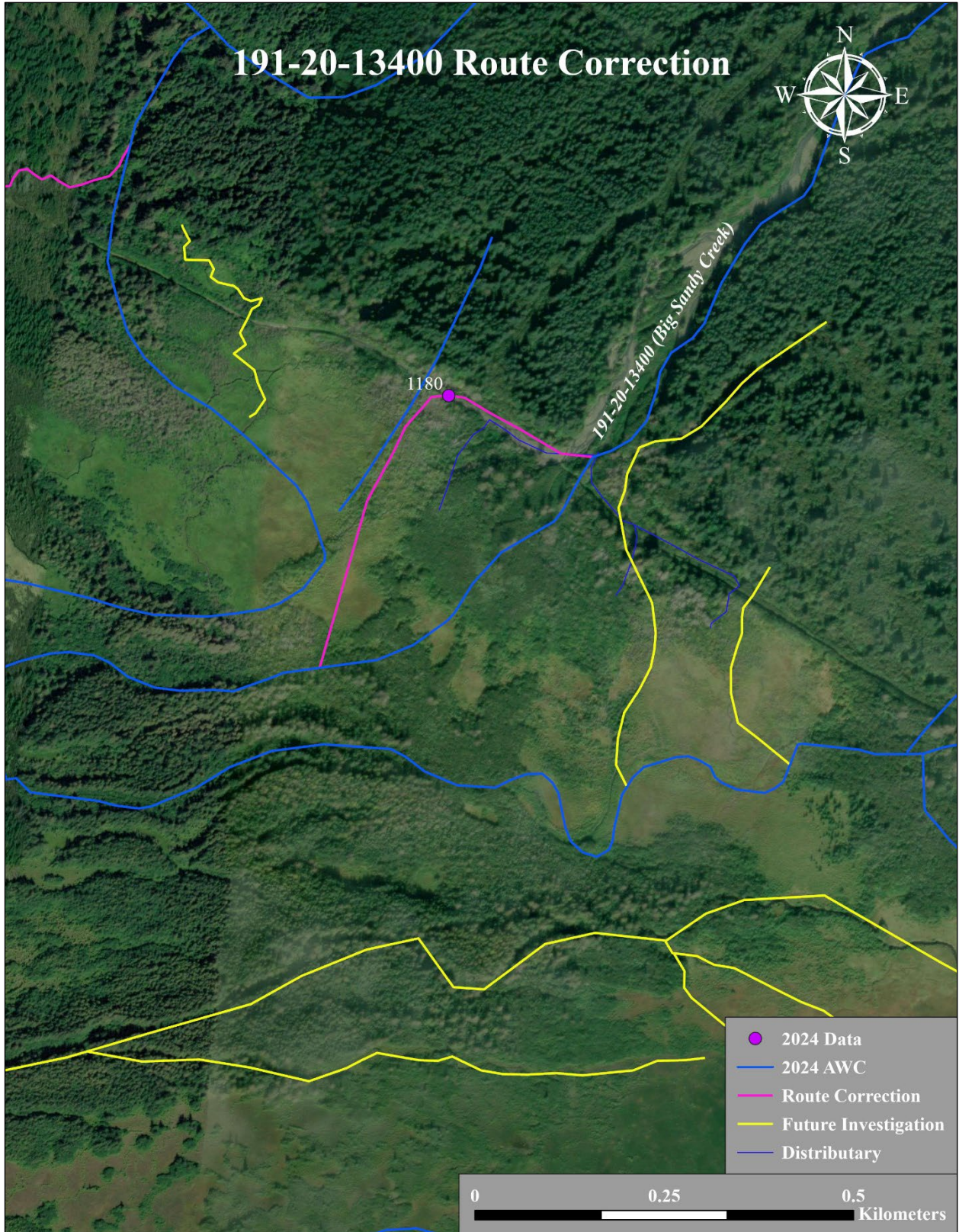


Figure 3.—191-20-13400 route correction map.